

MODULAR DUPLEX WORK STATION

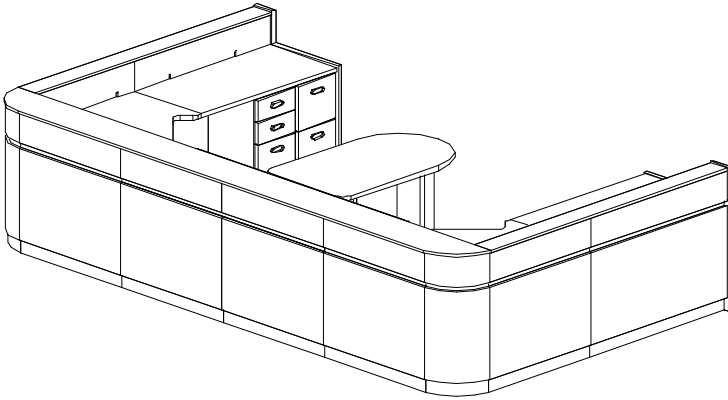


Figure 1(WEB 2B) Outside View

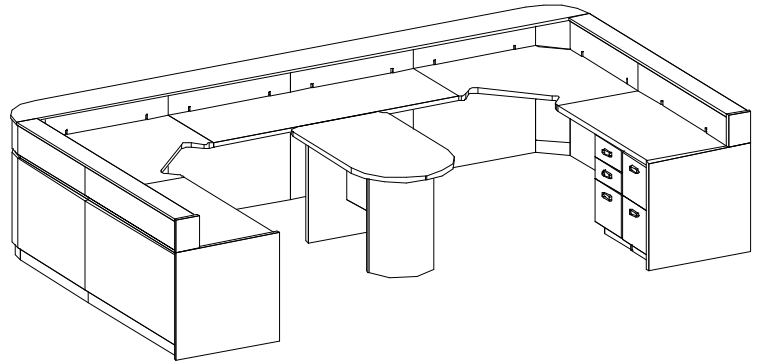


Figure 2(WEB 2B) Inside View

ACCESSORIES INCLUDED BUT NOT SHOWN:

- 2-ARTICULATING KEYBOARD ARMATURE
- 4-LOCKS FOR BASE CABINETS
- 2-OAK LAP DRAWERS

PRICING AS SHOWN

- WITH STD LAMINATES AND PVC EDGING: **\$6300.00**
- WITH GENUINE WOOD VENEER AND WOOD EDGING **\$7900.00**

Laminates Available:

Select from: **Wilsonart** ☆ **Formica** ☆ **Nevamar** ☆ **Pionite** ☆

Veneers Available:

Red & White Oak, Walnut, Mahogany, & Maple

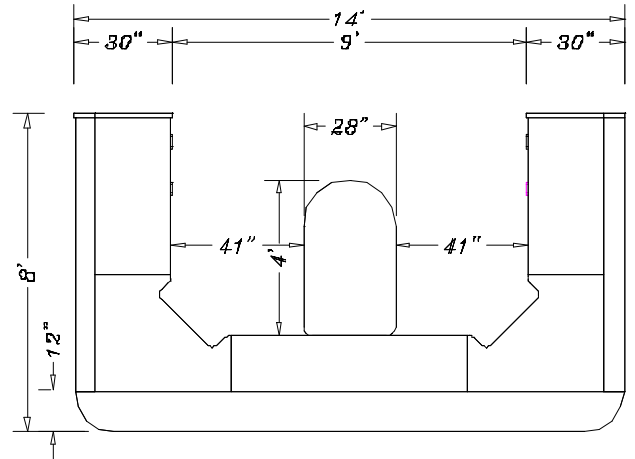


Figure 3 Plan View



**CUSTOM FINISH THE WAY YOU WANT IT.
ORDERING INSTRUCTIONS AND COLOR SELECTIONS**

FEATURES:

- UPPER & LOWER WALLS ARE HOLLOW WIRE CHASES WITH REMOVABLE ACCESS PANELS
- ACCESS PANELS HAVE MOUSE HOLE WIRE SLOTS - CONCEALS ALL THE EXCESS WIRES & PLUGS
- MULTIPLE SIZES & CONFIGURATIONS AVAILABLE UPON YOUR REQUEST
- FREE STANDING ISLAND WORK TABLE
- GLASS PANELS (From 12" to 36" High) CAN BE ADDED TO MOUNT ON TOP OF ANY WALL SECTION

WORKSTATIONS FOR TODAY'S ELECTRONIC OFFICE ENVIRONMENT

www.computerfurniture.com