

# EXECUTIVE CORNER WORK STATION

BEST SUITED FOR SMALLER EXECUTIVE OFFICE S 8' x 9' OR LARGER

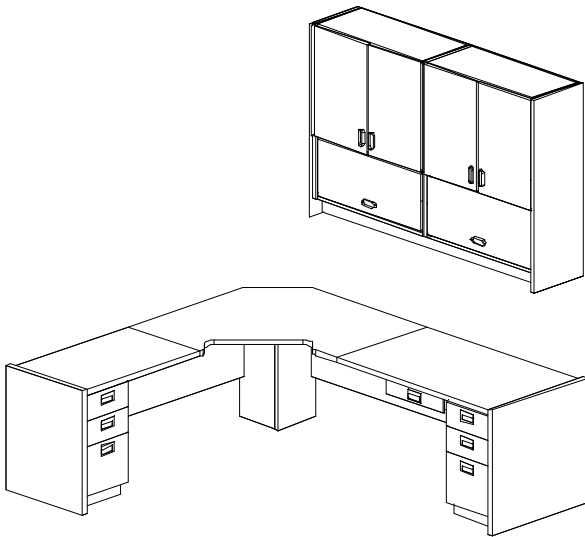


Figure 1(WEB-1B)

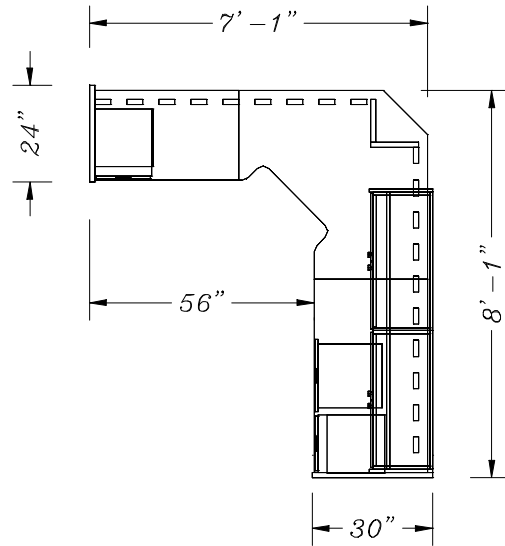


Figure 2 RT HAND

**ACCESSORIES INCLUDED BUT NOT SHOWN:**

- 1-ARTICULATING KEYBOARD ARMATURE
- 2-LOCKS FOR BASE CABINETS

**PRICING AS SHOWN (not including wallhung cabs.)**

WITH STD LAMINATES AND PVC EDGING: **\$1980.00**  
 WITH GENUINE WOOD VENEER AND WOOD EDGING: **\$2500.00**

**PRICE FOR (2) WALLHUNG CABINETS:**

PLASTIC LAMINATES: **\$995.00**  
 GEN. WOOD VENEER: **\$1250.00**

**Laminates Available:**

Select from: **Wilsonart** ★ **Formica** ★ **Nevamar** ★ **Pionite** ★

**Veneers Available:**

Red & White Oak, Walnut, Mahogany, & Maple

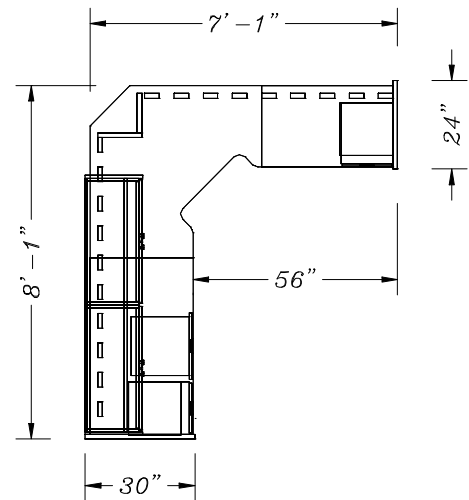


Figure 3 LEFT HAND

**FEATURES:**

- FRONT GRID WALLS ARE HOLLOW WIRE CHASES WITH REMOVABLE ACCESS PANELS
- MULTIPLE SIZES & CONFIGURATIONS AVAILABLE TO FIT YOUR NEEDS.
- MODULAR ASSEMBLY FOR EXPANDING, RELOCATING AND RE-ARRANGING.
- MODULAR DRAWER PEDESTALS CAN BE PLACED WHERE EVER YOU WANT THEM.
- MULTIPLE DRAWER PEDSTALS AND WALL HUNG CONFIGURATIONS AVAILABLE.



**CUSTOM FINISH THE WAY YOU WANT IT.  
 ORDERING INSTRUCTIONS AND COLOR SELECTIONS**

WORKSTATIONS FOR TODAY'S ELECTRONIC OFFICE ENVIRONMENT

[www.computerfurniture.com](http://www.computerfurniture.com)