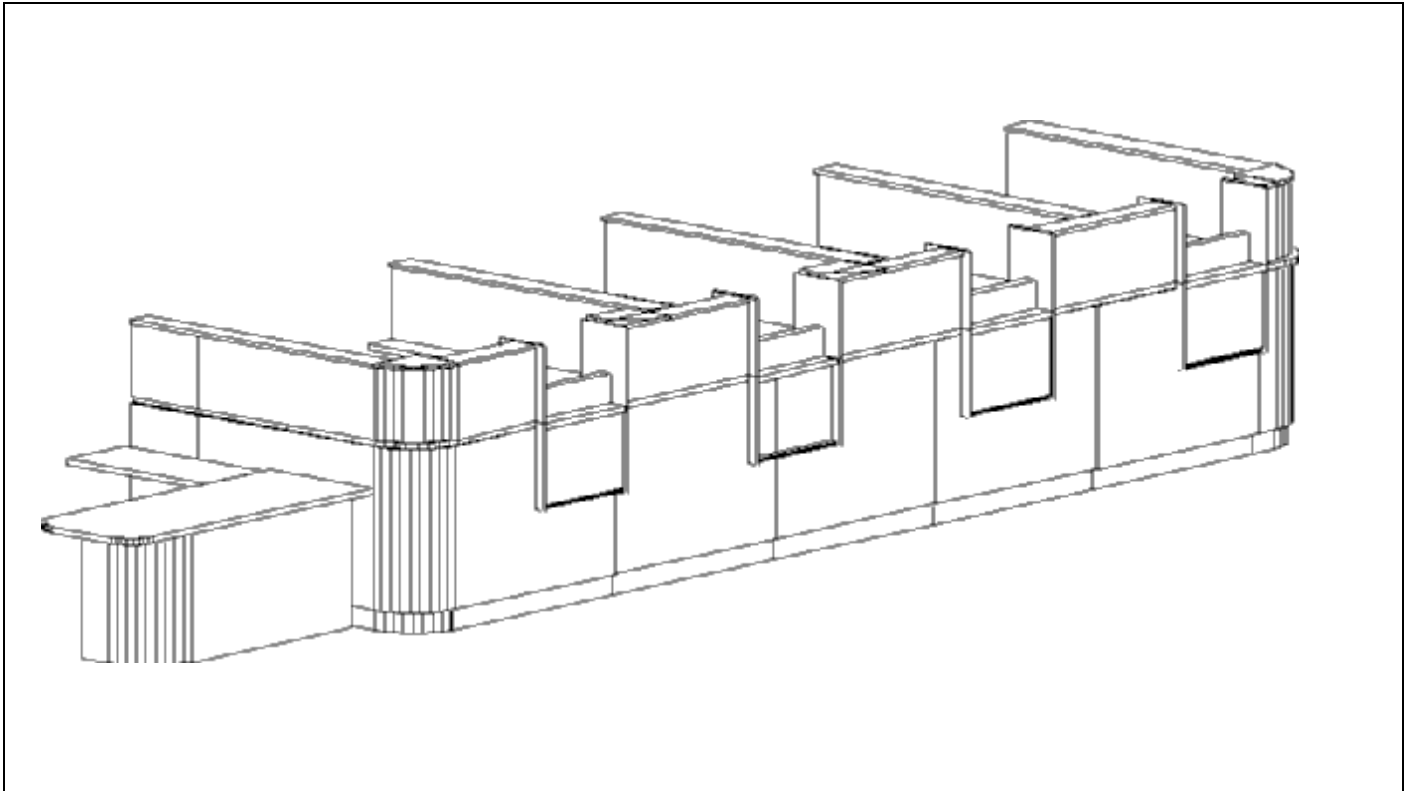


# BANKING ENVIRONMENTS



## **PRICING AS SHOWN**

WITH STD LAMINATES AND PVC EDGING:  
WITH GENUINE WOOD VENEER AND WOOD EDGING

## **Laminates Available:**

Select from: **Wilsonart** ★ **Formica** ★ **Nevamar** ★ **Pionite** ★

## **Veneers Available:**

Red & White Oak, Walnut, Mahogany, & Maple

The Banking Environment provides an excellent use for the modular gridwall system. The 6' wide stations can be configured to existing space while retaining the ability to be moved and rearranged.

Our innovative approach to fabrication also allows great flexibility in color selection. It is also possible to choose materials such as marble or stone for the deal plate counters.

## **FEATURES:**

- UPPER & LOWER WALLS ARE HOLLOW WIRE CHASES WITH VELCRO ATTACHED ACCESS PANELS
- REMOVABLE ACCESS PANELS HAVE MOUSE HOLE WIRE SLOTS - CONCEALS ALL THE EXCESS WIRES & PLUGS
- MULTIPLE SIZES & CONFIGURATIONS AVAILABLE UPON YOUR REQUEST
- GLASS DIVIDER PANELS (From 12" to 36" High) CAN BE ADDED TO MOUNT ON TOP OF ANY WALL SECTION
- SIMPLE BOLT TOGETHER ASSEMBLY

CUSTOM FINISH THE WAY YOU WANT.

ORDERING INSTRUCTIONS AND COLOR SELECTIONS

**Examples of configurations and dimensions.**

{[LINK](#)}

WORKSTATIONS FOR TODAY'S ELECTRONIC OFFICE ENVIRONMENT

[www.computerfurniture.com](http://www.computerfurniture.com)